



*Helping the South East Monitor Trends, Address Challenges, Maximise Opportunities  
and Influence National Policy*

---

## **Business Plan 2011-12**

---

### **Chairs Foreword**

The South East Strategic Partnership for Migration continues to embed its position as the lead professional body in the South East that enables us to understand why migrants move in and out of the area.

Through a proactive approach to partnership working and relationship building the Migration Partnership has made considerable strides into establishing a coherent narrative on local migration based on evidence rather than anecdotes; this business plan sets out how it will build and develop this through the following year.

Last year the Partnership was successful in delivering against all its objectives and more; providing an expert resource for local partners as well and contributing a strategic perspective to a number of key national consultations and debates. Through innovation and collaboration we were able to deliver this within the context of reduced grant funding.

Through 2011-12 the Migration Partnership will, within existing resource, continue to provide practical local support to monitor trends, help the area to understand, articulate and address the challenges whilst maximising the opportunities that migration brings.

### **Cllr Paul Watkins**

Chair

South East Strategic Partnership for Migration

## **1. Background**

- 1.1 The South East Strategic Partnership for Migration (SESPM) provides the South East area of England with practical expert support, strategic coordination and leadership in respect of all forms of international migration as it impacts locally.
- 1.2 SESPM has, in one form or another, performed this function for the South East since 2001 when Regional Strategic Partnerships were established to cover the UK.
- 1.3 In 2007 SESPM adopted its current title to reflect the all encompassing role in covering all aspects of international migration; previously the partnership had operated as the South of England Asylum Seeker Consortium and the Regional Strategic Coordination Group.
- 1.4 Geographically SESPM covers all 74 local authorities in the South East through a sub area structure; Thames Valley; Hampshire and Isle of Wight; Surrey and Sussex; and Kent and Medway.
- 1.5 With the exception only of London South East hosts the largest number of international migrants in the UK and is therefore greatly impacted economically and socially by changes in migration patterns and has a clear stake in policy and decision making.
- 1.6 The Partnership operates efficiently by means of a minimalist structure with one employee (the Partnership Manager) who is hosted by South East England Councils.

## **2. Building on Success**

- 2.1 This business plan is written in the context of the comprehensive spending review and is mindful of the tough financial environment in which it will operate.
- 2.2 The last year provides a useful framework going forward as the successes below demonstrate that this Partnership has been able to provide highly effective support within the context of a reduced budget for 2010-11.
- 2.3 Key successes in 2010-11 which this business plan will build upon (although not exclusively) were:
  - I. Establishment of the Local Area Strategic Migration Group (LASMG) structure covering, Thames Valley, Hampshire and Isle of Wight and Surrey and Sussex (adding to the existing Kent and Medway partnership), bringing together key partners for the first time under agreed terms of reference.
  - II. Production of the first Statistical Monitoring Dashboard report adopted by the South East England Councils bringing together the broad range of statistical information into single evidence based document.

- III. Coordinated, compiled, articulated and submitted responses from the South East in relation to government consultations into: Limiting non EU Economic Migrants; Ending the Detention of Children for Immigration Purposes; and the Student Immigration System. This reflected and articulated the broad range of concerns expressed across the area leading to participation in key related national strategic meetings.
- IV. Coordinated, compiled, articulated and submitted responses from the South East in relation to three national pieces of research i.e. the experience of Roma communities from Central and Eastern Europe and homelessness among accession state nationals in the UK. Our work has been included in papers presented to the National Migration Group.
- V. Delivering a high profile conference which examined the impact of migration on housing in the South East. This was achieved in partnership with South East England Councils and generated favourable responses from delegates in addition to positive press coverage.
- VI. Working in partnership with the South East Development Agency and the UK Border Agency to produce research analysis into the scale of reliance on non EU migrant labour by occupation and location. This will inform economic development and key partners planning strategies.
- VII. Establishing the No Recourse to Public Funds network in the South East providing a dedicated resource for local authorities and voluntary sector colleagues and establishing a bespoke joint training event. Over 90% of attendees rated the events as excellent or very good and relevant to their work.
- VIII. Representing the South East at the House of Lords discussion following the launch of Oxford University's 'Who Needs Migrant Workers?' publication and following debate. Representation was also provided for the All Party Parliamentary Group on Migration roundtable on student immigration reforms and their economic impact.
- IX. Establishing web based information: <http://www.secouncils.gov.uk/page/5/view/34/migration-partnership>
- X. Increasing partnerships and communications across local authorities, public authorities, private and voluntary sectors, these include but are not limited to: establishing key local authority links at county, unitary and district levels; representation of Local Authority Chief Executives (LACE) at Executive Board level; engaging police superintendents in all sub areas; establishing key links with Higher and Further Education area based bodies such as Kent Association of Further Education Corporations (KAFEC) and Higher Education South East (HESE) as well as the newly formed Skills Funding Agency (SFA) and regular participation in Oxford Universities Centre on Migration, Policy and Society (COMPAS) briefings and events; establishing links with a range of relevant organisations including Regional Action and Involvement South East (RAISE), National Institute for Adult Continuing Education (NIACE), Citizens Advice Bureaus; South East

Homelessness Forum (SEHF), South East Faith Forum (SEFF) and CVAs; and establishing dialogue with as the Federation of Small Businesses (FSB), Sector Skills Councils and relevant commercial organisations such as Work Programme providers and potential service providers.

- XI. Providing representation on strategic level bodies including the National Migration Group, Local Authority Migration Task Group, All Party Parliamentary Groups on Migration and Migration Advisory Committee Consultation events.
- XII. Delivered nine awareness raising presentations on migration to a range of audiences throughout the South East.
- XIII. Sponsoring research into expanding Gurkha and Nepalese communities in the South East through the University of Kent as well as providing strategic advice to the NIACE Gurkha Research Education and Adult Training (GREAT) project.
- XIV. Managing the Migration Impact Fund project to expand the [www.myukinfo.com](http://www.myukinfo.com) web based resource, with additional languages added, local templates expanded, public information updated and a focus on reaching migrant communities to participate in the 2011 census.
- XV. Progressing the South East Migrant Health Network and web based resource ([www.migranthealthse.co.uk](http://www.migranthealthse.co.uk)); appointment of the Centre for Public Innovation to drive the website and membership forward following changes to health provision after the general election in May 2010.

### 3. Objectives for 2011 – 12

#### 2011 -12 Objectives

1. Support and lead services in the South East to address challenges and maximise opportunities of migration.
2. Monitor and report trends relating to the nature and effects of migration to and from the South East.
3. Promote understanding of all aspects of migration and the integration of migrants with communities.
4. Enable collective voice from the South East experience to inform and influence national and local policy and decision making.
5. Build robust cross sector partnerships facilitating open and collaborative working.
6. Provide a conduit for two way information exchange between government departments and local area partners.

#### 4. 2011 – 12: Our key Activities for 2011 -12

- Development of the Migration Data Dashboard.
- Promoting our research analysis into the reliance on migrant labour and local capacity to respond positively.
- Coordinating responses to new national consultations.
- Providing a conduit to target specific information such as Assisted Voluntary Return processes and addressing irregular migration.
- Developing local strategies and partnerships for dealing with homelessness among accession state nationals.
- Monitoring and articulating the impact of the ending of transitional controls on A8 countries.
- Understand and address specific issues relating to Central and Eastern European Roma communities in the South East.
- Support research and partnership working to understand and address the impact of resettlement of Gurkha veterans and their dependents.
- Engaging partners with the introduction of the Pre Departure Accommodation in the South East for Appeal Rights Exhausted families.
- Continuing to engage with partners locally and nationally on UASC and the provision of support for former relevant children.
- Expanding the South East No Recourse to Public Funds Network through the establishment of an online forum and information exchange.
- Continued support and partnership working with the Department of Health to develop the Migrant Health on line resource for practitioners.
- Continue facilitating Executive Board Meetings, Local Area Strategic Migration Groups and the South East NRPF network.
- Continue to provide presentations and information to local partners and provide a means of engaging on specific issues such as ESOL and community cohesion.
- Development of the web pages with in house editing facilities to provide an up to date resource for partners.
- Provide representation for the South East at national meetings and events such as the National Migration Group, Local Government Association Migration Task Group and All Party Parliamentary Groups

4.1 To achieve the above a detailed work plan is included as an Annex I to this business plan.

4.2 Progress against the work plan will be monitored by:

- Reporting to the Executive Board Meetings
- Meetings between the Chair and Partnership Manager
- As part of the regular meetings with the UK Border Agency Regional Director as required under the grant agreement.

## 5. Our Partners in the South East

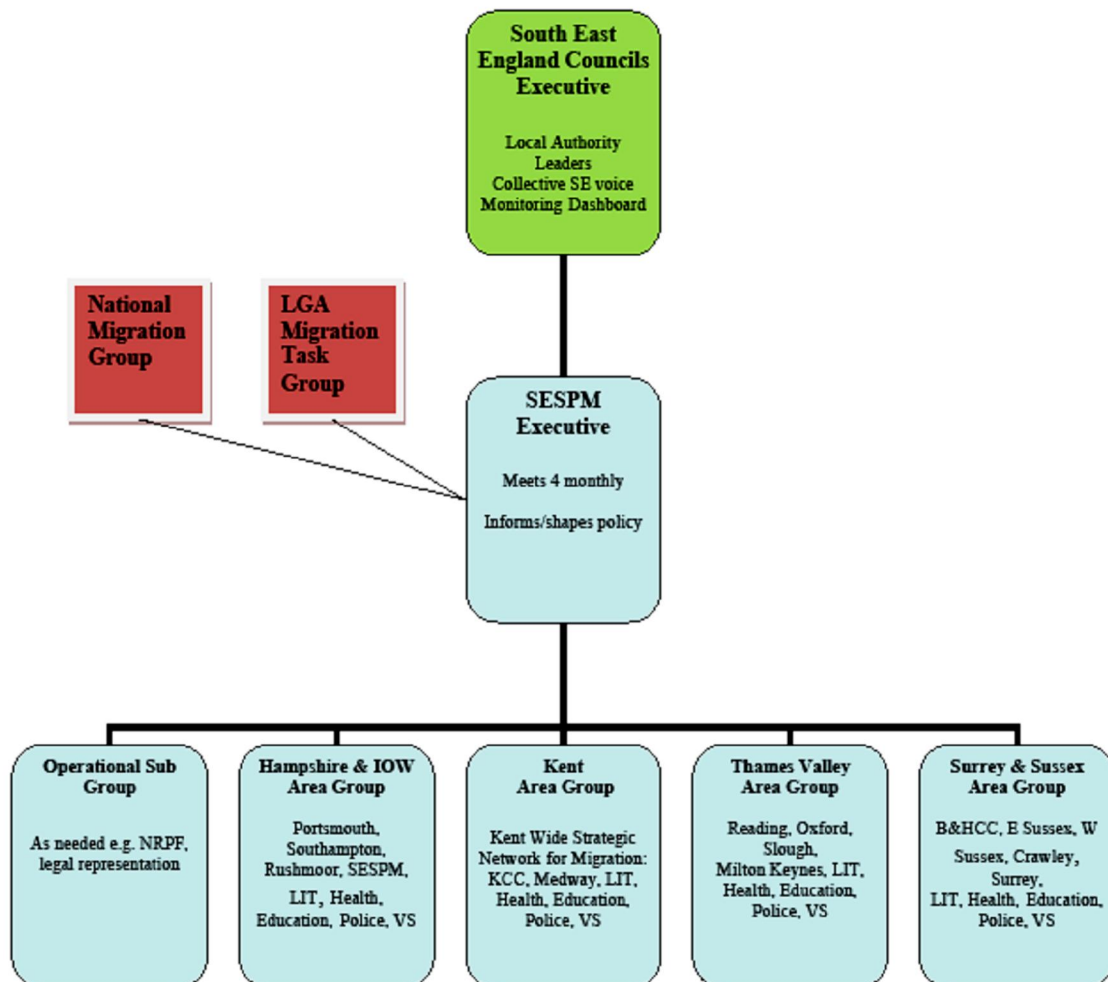


Figure 1: the partnership, sub structure and strategic connections of SESPM

5.1 Partnership working and relationship building have been key to delivering successful services, enabling SESPM to utilise existing structures as well as establishing new ones that bring partners together to provide a local resource that supports cost effective service delivery.

5.2 Whilst the current partnership is comprehensive in its composition, it is recognised that the make up and membership will need to change to reflect the new and emerging local frameworks as well as include new partners to fully engage with national policy movements.

5.3 Our current partners at the Executive level are:

- UK Border Agency
- South East England Councils
- South East England Development Agency
- 74 Local authorities of the South East
- Local Authority Chief Executives (LACE)
- Fire and Rescue Service
- Department of Work and Pensions
- Department of Health
- Skills Funding Agency
- Police
- Voluntary and Community Sector (RAISE)
- Gang Masters Licensing Authority

5.4 Other attendees at Executive Board Meetings:

- Office for National Statistics
- Federation of Small Businesses
- Migration Advisory Committee
- MIND
- NIACE
- Health Protection Agency
- Migration Advisory Committee (MAC)

5.5 Local migration impacts are captured through the four Local Area Strategic Migration Groups that subdivide the South East see 2.3 (i) and figure 1. Each group has agreed individual terms of reference and membership that reflects the nature and characteristics of migration in those areas,

5.6 Where required key issues in the South East may be taken forward through operational groups such as the No Recourse to Public Funds Network (NRPF) or taken developed through dedicated task and finish groups such as the Labour Market research into the level of reliance on migrant labour.

5.7 The Partnership will work proactively and develop relationships with all relevant partners within the South East region.

5.8 The SESPM Executive will enable the region to have an effective voice at a national level with the Home Office, DCLG, and other Government departments and with networks such as the National Migration Group and the LGA Task Force.

## 6. Framework of the Partnership's activity

6.1 The activity of the Partnership takes place within the framework of the following:

- Partnership Enabling Grant
- Coalition Agreement 2010
- Immigration & Asylum legislation (including 1971; 1999; 2002; 2004; 2006 Acts)
- New Asylum Model
- UKBA Regional operational responsibilities;
- Children Act 1989
- National Assistance Act 1948
- The NHS and Community Care Act 1990
- The Children ( Leaving Care ) Act 2000
- The Human Rights Act 1998

## 7. Overview of Migrants in the South East Region

7.1 Outside of London the South East has the largest migrant population in the UK. A data dashboard summary is provided in Annex II of this business plan.

7.2 The area is diverse in its make up of migrants with the majority comprising of migrant workers from inside and outside of the EU. **Non EU Migrant** levels are controlled via the points based system and sponsor licences and subject to the immigration limit applied from April 2011. **EU Migrant workers** from the A8 countries that joined the EU will from 1<sup>st</sup> May 2011 no longer be subject to transition controls.

7.3 The area is often associated with hosting large numbers of **Asylum Seekers**, this stems from the area containing key points of entry to the UK but this group in fact now comprise a very small percentage of the overall migrant population. However there are dispersal areas still in the South East and locations with relatively significant populations. **Unaccompanied Asylum Seeking Children** (UASC) and those leaving care remain significant as their care is provided by local authorities. The implications of the Barking and Dagenham judgement for those **Former Relevant Children** with a negative asylum outcome continue to be monitored; the key issues are around the delivery and financial liabilities of providing on going support.

7.4 The introduction of Pre Departure Accommodation for **Appeal Rights Exhausted Families** within the South East represents a new development

and the impact will be monitored in collaboration with key partners. The South East also contains **Immigration Detainees** with removal centres in Dover and Gatwick. Canterbury prison is one two in the country which accommodates 100% **Foreign National Prisoners**.

7.5 **Irregular migrants** are by definition difficult to quantify however significant enforcement activities have taken place in the South East in 2010 . 11 such as uncovering sham marriages and illegal working operations and human trafficking. The UKBA and Gang Masters Licensing Authority operations contribute significantly to our understanding of this issue. The introduction of the permanent limit of non EU economic and student migration may have an impact on irregular migration in 2011 . 12.

7.6 There are significant **Gurkha veteran and Nepalese** communities particularly around garrison towns in Hampshire and Kent. In Hampshire in particular rapid growth of this community has created challenges for public services to respond to has been the subject of discussions at the highest level of government.

## 8. Summary

8.1 This business plan sets out our objectives and how we will deliver them to fulfil the requirements of the Enabling Grant whilst adding value to it within the framework of the reduction in grant applied in 2010.

8.2 The springboard for this years plan is provided by the fifteen key successes achieved last year exemplifying the partnerships capacity to deliver more for less whilst seeking to generate additional funding to supplement future activities when this grant period ends in March 2012.

8.3 The plan is driven by six overall objectives and the approach for delivery through activities set out in the work plan.

8.4 This plan recognises that migration is an area subject to rapid change and is therefore structured to enable flexibility.

8.5 This plan sets out how we aim to continue to provide an expert resource for the South East which enables the area to deal with and benefit from the impacts of migration.

Roy Millard  
Partnership Manager