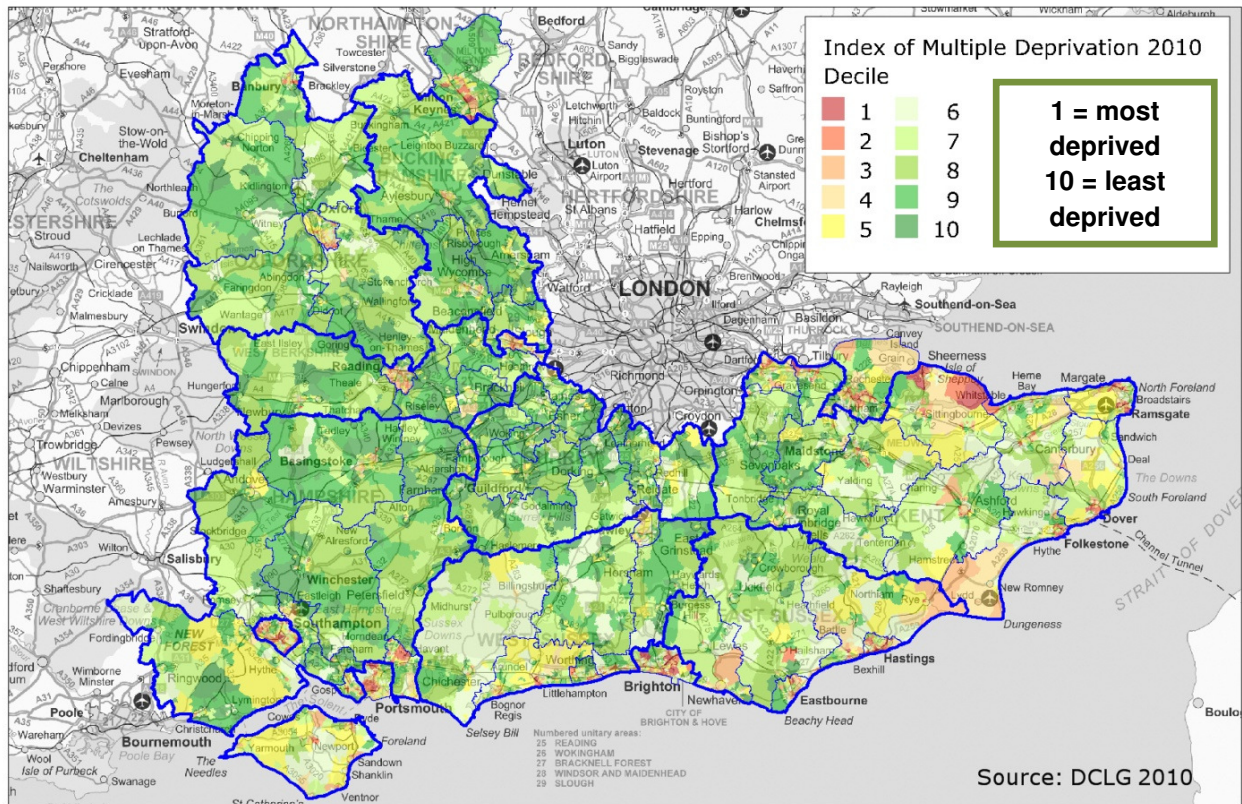
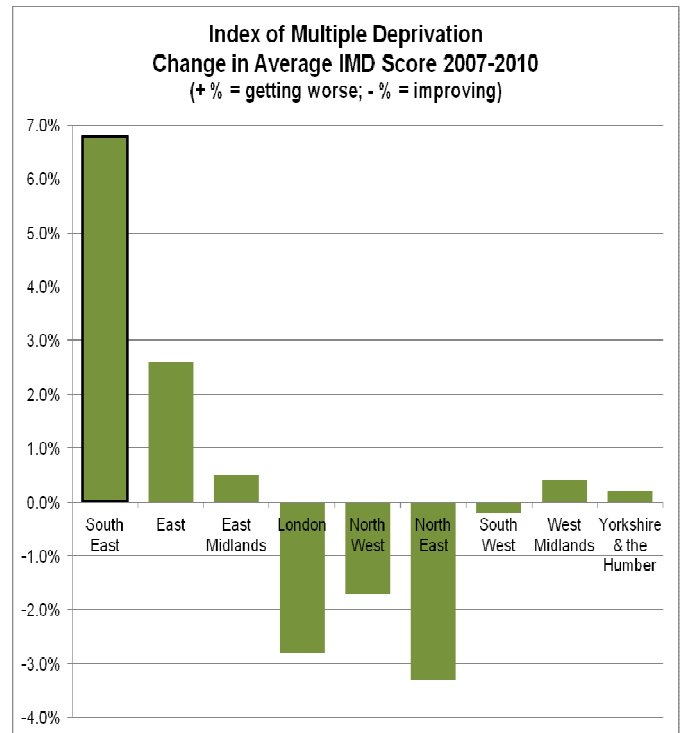
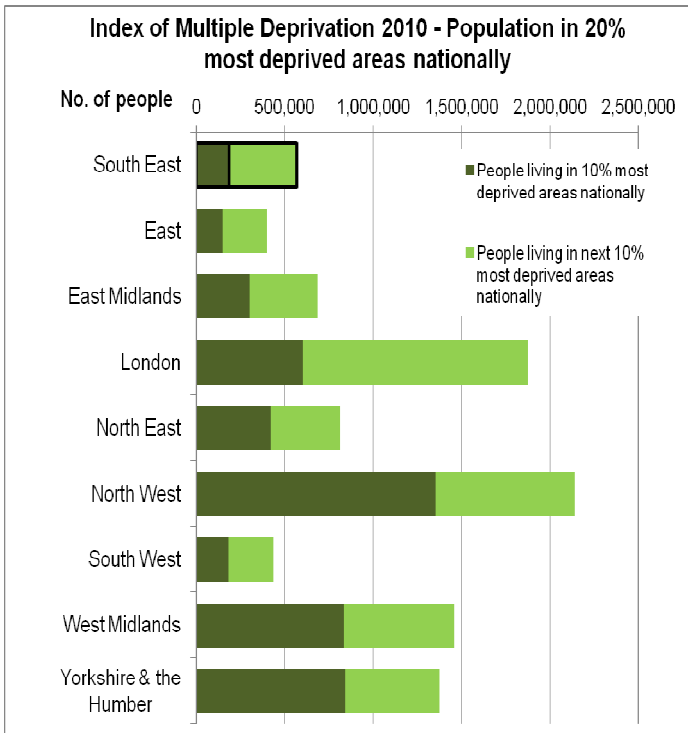


Latest Data: 2010 (First time in Dashboard)
Source: Communities.gov.uk; official data updated approximately every 3 years



© Crown Copyright and database right 2011. All rights reserved. Ordnance Survey Licence number 100029140
Produced by SEEDA Research & Economics © All rights reserved 2011



Index of Multiple Deprivation 2010 - People living in most deprived areas

* The country is divided into SOAs (Super Output Areas) to allow fine-level analysis of the IMD. Each SOA contains approximately 1500 residents.

	Approx. Population in 10% most deprived SOAs* nationally	Pop. in next worst 10%	% of local authority population in each decile of SOAs nationally, 1= 10% most deprived SOAs, 10= 10% least deprived SOAs nationally.									
			1	2	3	4	5	6	7	8	9	10
Aylesbury Vale	0	0	0.0%	0.0%	5.4%	8.9%	3.6%	1.8%	9.8%	17.0%	28.6%	25.0%
Chiltern	0	0	0.0%	0.0%	0.0%	3.5%	8.8%	5.3%	3.5%	17.5%	14.0%	47.4%
South Bucks	0	0	0.0%	0.0%	0.0%	0.0%	10.0%	15.0%	7.5%	22.5%	17.5%	27.5%
Wycombe	0	0	0.0%	0.0%	5.6%	11.2%	9.3%	9.3%	6.5%	9.3%	15.9%	32.7%
Buckinghamshire (total)	0	0										
Eastbourne	7,500	7,500	8.5%	8.5%	23.7%	16.9%	6.8%	16.9%	6.8%	5.1%	6.8%	0.0%
Hastings	22,500	13,500	28.3%	17.0%	15.1%	15.1%	7.5%	5.7%	7.5%	3.8%	0.0%	0.0%
Lewes	0	0	0.0%	0.0%	11.3%	11.3%	12.9%	17.7%	19.4%	11.3%	6.5%	9.7%
Rother	3,000	4,500	3.4%	5.2%	15.5%	10.3%	19.0%	19.0%	8.6%	10.3%	8.6%	0.0%
Wealden	0	4,500	0.0%	3.2%	2.1%	4.2%	5.3%	12.6%	23.2%	18.9%	14.7%	15.8%
East Sussex (total)	33,000	30,000										
Basingstoke and Deane	0	0	0.0%	0.0%	3.8%	13.5%	8.7%	3.8%	7.7%	6.7%	23.1%	32.7%
East Hampshire	0	0	0.0%	0.0%	1.4%	0.0%	8.3%	4.2%	8.3%	23.6%	29.2%	25.0%
Eastleigh	0	0	0.0%	0.0%	3.9%	6.5%	9.1%	9.1%	9.1%	11.7%	14.3%	36.4%
Fareham	0	0	0.0%	0.0%	2.7%	1.4%	2.7%	4.1%	10.8%	13.5%	21.6%	43.2%
Gosport	1,500	4,500	1.9%	5.8%	13.5%	17.3%	9.6%	7.7%	9.6%	15.4%	11.5%	7.7%
Hart	0	0	0.0%	0.0%	0.0%	0.0%	0.0%	0.0%	7.5%	7.5%	7.5%	77.4%
Havant	10,500	22,500	9.0%	19.2%	7.7%	5.1%	11.5%	14.1%	14.1%	7.7%	9.0%	2.6%
New Forest	0	1,500	0.0%	0.9%	1.8%	4.4%	10.5%	12.3%	15.8%	8.8%	21.9%	23.7%
Rushmoor	1,500	3,000	1.7%	3.4%	1.7%	8.5%	8.5%	11.9%	5.1%	22.0%	13.6%	23.7%
Test Valley	0	1,500	0.0%	1.4%	1.4%	5.7%	10.0%	2.9%	14.3%	18.6%	12.9%	32.9%
Winchester	0	0	0.0%	0.0%	2.9%	0.0%	5.8%	7.2%	7.2%	18.8%	14.5%	43.5%
Hampshire (total)	13,500	33,000										
Ashford	0	6,000	0.0%	5.7%	8.6%	8.6%	4.3%	22.9%	15.7%	15.7%	14.3%	4.3%
Canterbury	0	12,000	0.0%	8.9%	8.9%	7.8%	12.2%	15.6%	14.4%	23.3%	8.9%	0.0%
Dartford	0	4,500	0.0%	5.2%	10.3%	8.6%	22.4%	3.4%	19.0%	10.3%	10.3%	10.3%
Dover	1,500	15,000	1.5%	14.9%	6.0%	16.4%	16.4%	14.9%	11.9%	13.4%	3.0%	1.5%
Gravesham	4,500	7,500	4.8%	7.9%	9.5%	14.3%	9.5%	12.7%	15.9%	6.3%	14.3%	4.8%
Maidstone	1,500	7,500	1.1%	5.4%	4.3%	7.6%	5.4%	13.0%	14.1%	13.0%	14.1%	21.7%
Sevenoaks	0	1,500	0.0%	1.4%	2.7%	5.4%	1.4%	10.8%	17.6%	16.2%	13.5%	31.1%
Shepway	6,000	10,500	6.2%	10.8%	15.4%	15.4%	15.4%	13.8%	15.4%	4.6%	3.1%	0.0%
Swale	12,000	13,500	9.8%	11.0%	9.8%	13.4%	14.6%	14.6%	12.2%	7.3%	4.9%	2.4%
Thanet	21,000	16,500	16.7%	13.1%	11.9%	11.9%	16.7%	8.3%	13.1%	6.0%	2.4%	0.0%
Tonbridge & Malling	0	0	0.0%	0.0%	4.3%	1.4%	12.9%	8.6%	15.7%	12.9%	21.4%	22.9%
Tunbridge Wells	0	0	0.0%	0.0%	4.4%	4.4%	8.8%	14.7%	10.3%	25.0%	16.2%	16.2%
Kent (total)	46,500	94,500										
Cherwell	0	7,500	0.0%	5.5%	4.4%	5.5%	4.4%	12.1%	16.5%	11.0%	25.3%	15.4%
Oxford	1,500	16,500	1.2%	12.9%	10.6%	14.1%	18.8%	15.3%	10.6%	10.6%	5.9%	0.0%
South Oxfordshire	0	0	0.0%	0.0%	0.0%	3.4%	4.5%	6.7%	9.0%	15.7%	21.3%	39.3%
Vale of White Horse	0	1,500	0.0%	1.3%	0.0%	0.0%	1.3%	14.7%	6.7%	18.7%	20.0%	37.3%
West Oxfordshire	0	0	0.0%	0.0%	0.0%	3.1%	3.1%	4.7%	10.9%	9.4%	29.7%	39.1%
Oxfordshire (total)	1,500	25,500										

CTD	Approx. Population in 10% most deprived SOAs nationally	Pop in next worst 10%	% of LA population in each decile nationally, 1=worst 10%, 10=best 10% nationally.									
			1	2	3	4	5	6	7	8	9	10
Elmbridge	0	0	0.0%	0.0%	1.2%	3.7%	1.2%	7.4%	3.7%	8.6%	17.3%	56.8%
Epsom and Ewell	0	0	0.0%	0.0%	2.3%	4.5%	2.3%	6.8%	6.8%	11.4%	20.5%	45.5%
Guildford	0	0	0.0%	0.0%	2.4%	4.8%	8.3%	3.6%	10.7%	13.1%	20.2%	36.9%
Mole Valley	0	0	0.0%	0.0%	0.0%	3.7%	0.0%	13.0%	9.3%	7.4%	22.2%	44.4%
Reigate & Banstead	0	1,500	0.0%	1.2%	1.2%	5.8%	4.7%	8.1%	10.5%	12.8%	20.9%	34.9%
Runnymede	0	0	0.0%	0.0%	0.0%	7.7%	5.8%	5.8%	17.3%	9.6%	28.8%	25.0%
Spelthorne	0	0	0.0%	0.0%	1.7%	8.3%	3.3%	16.7%	15.0%	10.0%	30.0%	15.0%
Surrey Heath	0	0	0.0%	0.0%	0.0%	3.6%	3.6%	3.6%	7.3%	9.1%	14.5%	58.2%
Tandridge	0	0	0.0%	0.0%	0.0%	0.0%	6.0%	16.0%	12.0%	26.0%	22.0%	18.0%
Waverley	0	0	0.0%	0.0%	1.2%	1.2%	1.2%	8.5%	7.3%	13.4%	15.9%	51.2%
Woking	0	1,500	0.0%	1.6%	1.6%	3.3%	6.6%	9.8%	8.2%	9.8%	23.0%	36.1%
Surrey (total)	0	3,000										
Adur	0	6,000	0.0%	9.5%	16.7%	4.8%	16.7%	23.8%	11.9%	4.8%	9.5%	2.4%
Arun	4,500	7,500	3.2%	5.3%	11.7%	7.4%	17.0%	17.0%	14.9%	8.5%	12.8%	2.1%
Chichester	0	0	0.0%	0.0%	2.8%	5.6%	12.5%	26.4%	15.3%	20.8%	9.7%	6.9%
Crawley	0	1,500	0.0%	1.5%	3.1%	24.6%	20.0%	21.5%	7.7%	6.2%	9.2%	6.2%
Horsham	0	0	0.0%	0.0%	0.0%	1.2%	7.4%	8.6%	9.9%	18.5%	19.8%	34.6%
Mid Sussex	0	0	0.0%	0.0%	1.2%	1.2%	6.0%	6.0%	6.0%	10.7%	26.2%	42.9%
Worthing	0	9,000	0.0%	9.2%	7.7%	12.3%	15.4%	12.3%	15.4%	7.7%	9.2%	10.8%
West Sussex (total)	4,500	24,000										
Bracknell Forest	0	0	0.0%	0.0%	0.0%	4.1%	8.1%	13.5%	10.8%	8.1%	17.6%	37.8%
Brighton & Hove	28,500	27,000	11.6%	11.0%	19.5%	12.8%	12.2%	14.0%	8.5%	6.1%	3.7%	0.6%
Isle of Wight	0	7,500	0.0%	5.6%	19.1%	14.6%	25.8%	15.7%	10.1%	5.6%	3.4%	0.0%
Medway	12,000	22,500	4.9%	9.1%	17.7%	15.9%	8.5%	6.7%	7.3%	11.0%	11.0%	7.9%
Milton Keynes	10,500	16,500	5.0%	7.9%	4.3%	8.6%	7.9%	7.2%	7.2%	15.1%	24.5%	12.2%
Portsmouth	21,000	21,000	11.4%	11.4%	10.6%	18.7%	16.3%	8.1%	13.0%	5.7%	2.4%	2.4%
Reading	0	18,000	0.0%	12.9%	16.1%	17.2%	11.8%	12.9%	2.2%	12.9%	5.4%	8.6%
Slough	1,500	13,500	1.3%	11.5%	23.1%	24.4%	16.7%	11.5%	10.3%	1.3%	0.0%	0.0%
Southampton	13,500	42,000	6.2%	19.2%	11.6%	16.4%	17.1%	10.3%	6.8%	4.8%	6.8%	0.7%
West Berkshire	0	1,500	0.0%	1.0%	0.0%	5.2%	5.2%	6.2%	21.6%	14.4%	18.6%	27.8%
Windsor & Maidenhead	0	0	0.0%	0.0%	1.1%	2.3%	8.0%	9.1%	8.0%	14.8%	18.2%	38.6%
Wokingham	0	0	0.0%	0.0%	0.0%	1.0%	5.0%	1.0%	1.0%	8.0%	15.0%	69.0%
Unitaries (total)	87,000	169,500										
SOUTH EAST TOTAL	186,000	379,500	2.3%	4.8%	6.5%	8.4%	9.5%	10.5%	10.7%	11.8%	14.4%	21.1%