

South East England Councils Executive Committee 7 June 2011

Pam Alexander
Kathy Slack
South East England
Development Agency

WWW.SEEDA.CO.UK

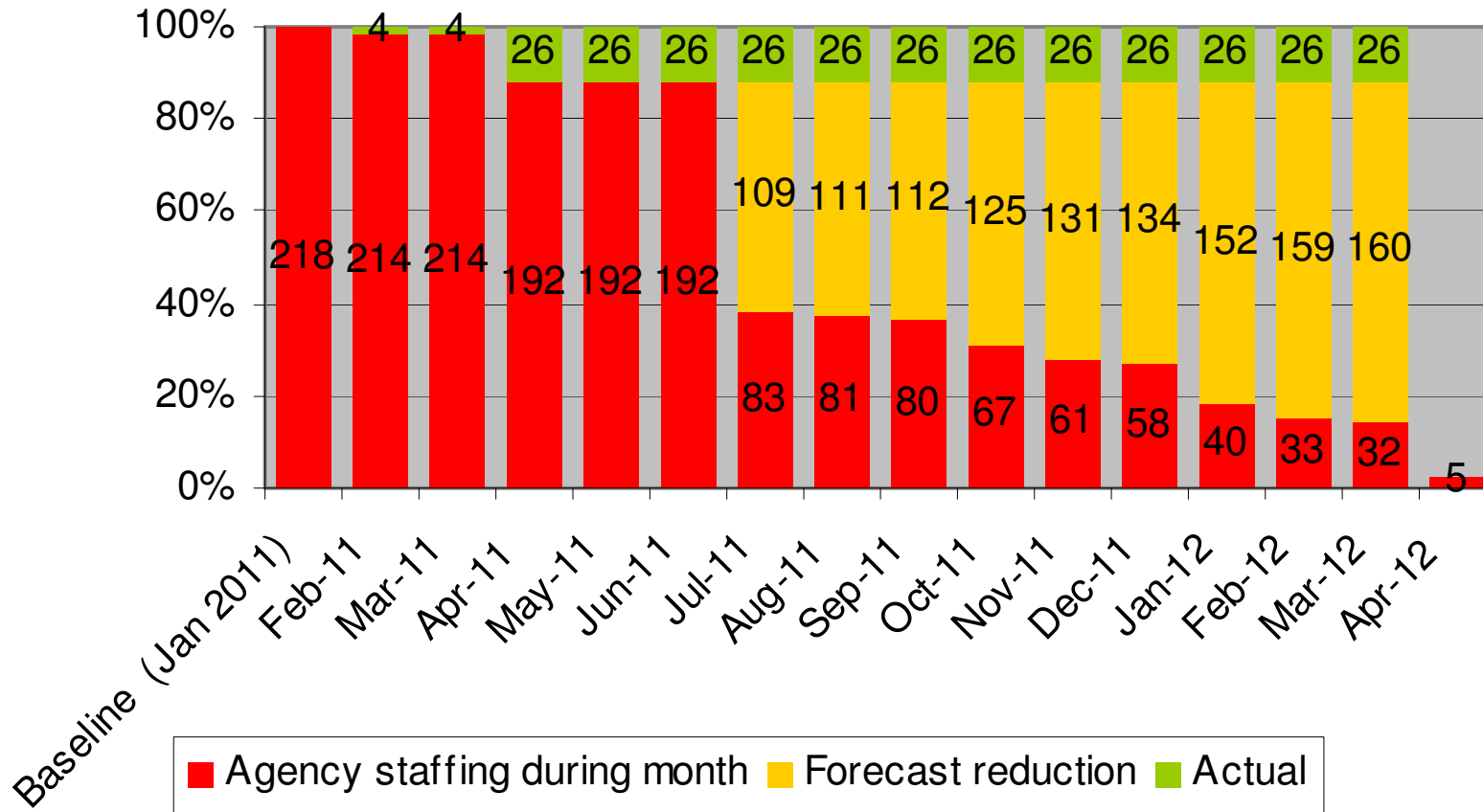
Approach to Closure: Professionalism throughout

MISSION:

Delivering what's important for the South East economy while planning and implementing a professional transition to closure.

Aims	Success Measures
Aim 1: Effective, smooth and professional closure of the agency	<ol style="list-style-type: none">1. Completed by April 2012 with minimum handover to residuary body.2. Clean accounts for 2010/11 and 2011/123. Delivery to time, cost, quality
Aim 2: Economic value for the South East is retained through closure and into successor bodies	<ol style="list-style-type: none">1. Key programmes and interventions continue to deliver anticipated economic development goals.2. Clear continuity, delivery and transition plans, with priority to highest impact interventions.

Staff transfer/exit



Where are our functions going?

What	When	Who
Business Link South East and Business Support	Current service with SERCO until November 2011 National Contact Centre launches 20 September 2011	BIS Currently tendering for national service
Innovation Growth Teams	Funding ends 31 August 2011 Most seem likely to cease trading Coaching for Growth service being procured – expected to be available 31 Jan 2012	BIS
National Aerospace Technology Strategy (NATS)	Transferring programme	Technology Strategy Board (TSB)

Where are our functions going?

What	When	Who
Sector Consortia	Funding ceased March 2011. All 7 are seeking commercial income to continue	<ol style="list-style-type: none">1. Farnborough Aerospace Consortium (FAC)2. Marine South East3. Envirobusiness4. Security Innovation and Technology Consortium5. South East Centre for Built Environment (SECBE)6. South East Healthcare Technologies Alliance (SHETA)7. South East Media Network (SEMN)

Where are our functions going?

What	When	Who
European Regional Development Fund & Rural Development Programme for England	ERDF: transferring 1 July 2011 RDPE: transferring 1 July 2011	CLG DEFRA
Foreign Direct Investment	Transferred on 1 May 2011 to PA Consulting Services Ltd who in partnership with OCO Consulting and the British Chambers of Commerce has been procured to deliver a national service	UKTI (still the brand)
Economic Intelligence	Economic and research ceases 5 July 2011. Transferring economy and evidence reports, data and surveys, research papers, economic models and some GIS maps	SEEC

Where are our functions going?

What	When	Who
Skills	Strategic function ceased. Sharing skills and labour market intelligence as part of economic intelligence – see previous	
Economic Shocks / Redundancy Task Forces	Withdrawn from task forces. Responsibility for redundancy support now with JCP	Job Centre Plus (JCP) and other partners inc. LAs
2012	2012?	LOCOG

Where are our functions going?

What	When	Who
<p>Finance South East – Regional Venture Capital Loan Funds</p>	<p>Plans are in hand to agree the destination of our interests and future on-going management oversight to be undertaken by Capital for Enterprise Limited (CfEL). Transfer expected by September 2011.</p>	<p>Capital for Enterprise Limited (CfEL).</p>
<p>Assets</p>	<p>Sell 5 sites: Ropetackle, Shoreham; Adur Business Centre; Andover Business Centre; Farringdon Business Centre; Chilterns Business Centre.</p> <p>In discussion with HCA, Government and partners in Solent and Kent regarding possible transfer to HCA under Stewardship model. No agreement by Ministers yet.</p>	<p>To be decided</p>