

Brexit : The impact on Kent

Mike Whiting

Cabinet Member for Planning, Highways, Transport &
Waste

Brexit : The basics

- No deal means no implementation period
- If no deal, the implication is WTO rules after 29 March 2019
- If WTO rules strictly applied, the volume of trade at our borders subject to controls increases significantly
- The way in which we cross the channel will change

Brexit : The Kent border

- Increased checks on French side result in:
 - Slow down of freight at Port of Dover
 - Slow down of freight at Eurotunnel
 - Slow down of passenger movement through both
 - Increase in Trading Standards & Port Health Authority checks

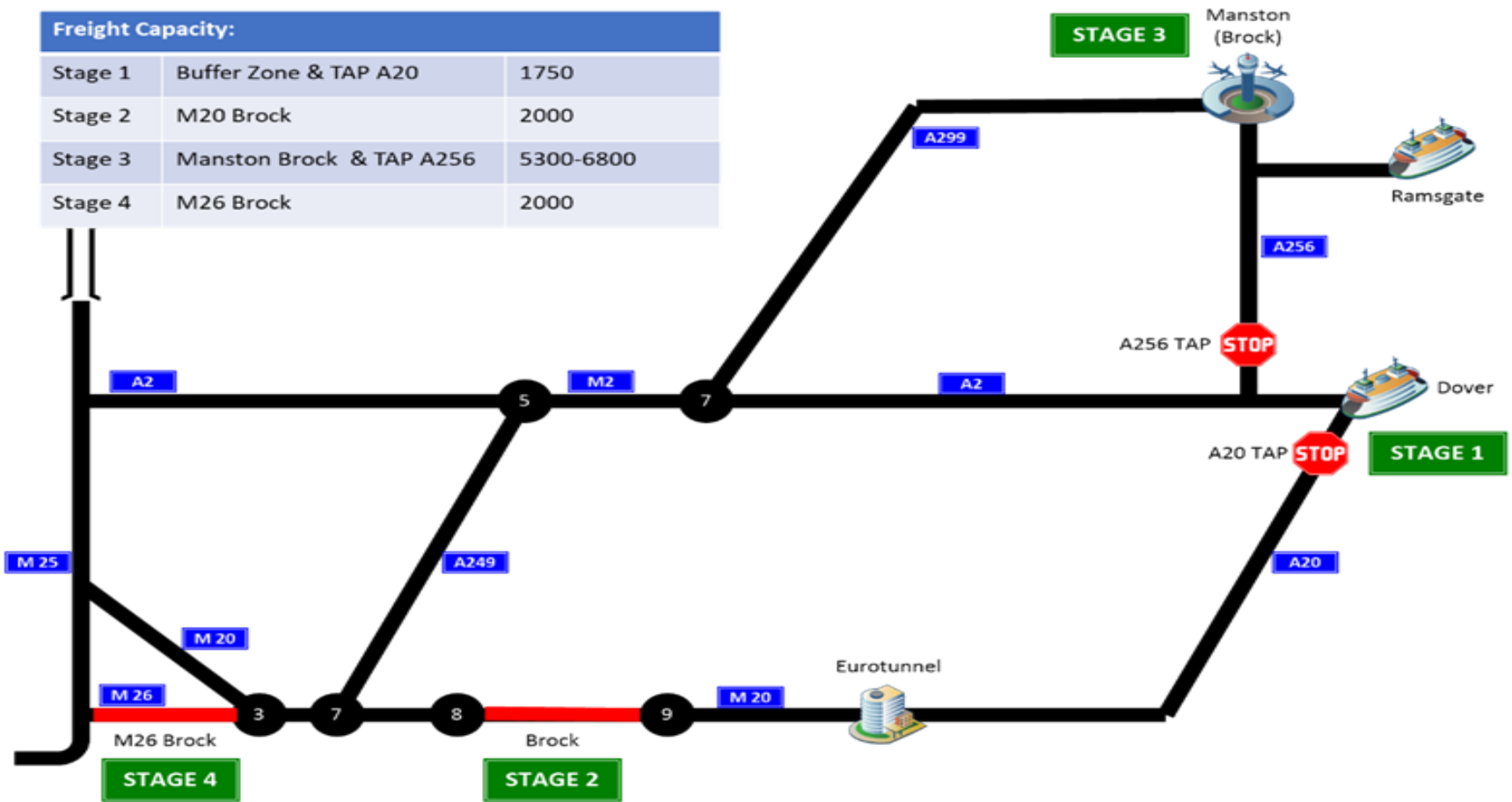


D1ND Planning Assumptions

- **UK leaves EU on 29 March without a deal**
- Increased security checks at the borders
- Slowdown of freight and non-freight
- Queues build up quickly - **10000 freight**
- Strategic Road Network Impacted
- Local Road Network Impacted
- Severe and prolonged congestion – **3 to 6 months disruption**
- Supply Chain Impacted
- Other risks – increased migrant activity / panic buying fuel / dangerous stockpiling / panic buying food /civil unrest

Freight Capacity:

Stage 1	Buffer Zone & TAP A20	1750
Stage 2	M20 Brock	2000
Stage 3	Manston Brock & TAP A256	5300-6800
Stage 4	M26 Brock	2000



Kent Risk Overview

Impact	5 Severe					
	4 Significant				Severe disruption to 2 Channel routes	
	3 Moderate		Transport Accident – Rail	Disease – Plant Health	Transport Accident – Road	
	2 Minor		Maritime Accident of Deliberate Blockade	Animal Disease	Industrial Action Public Disorder	
	1 Limited					
		1 Low	2 Medium /Low	3 Medium	4 Medium/High	5 High
Likelihood						

Key Impacts

- **Community Impact**– disruption to passenger and freight networks leaving the UK will impact on Kent strategic road network and local communities in and across the county.
- **Food Supply Chain** – exportation of food from the UK, but predominantly importation of food from EU and non EU countries.
- **Health** – impacts of medicines and medical consumables, impact on care delivery
- **Humanitarian** – slowdown of freight has previously resulted in increased migrant activity, including unaccompanied asylum seeking children.

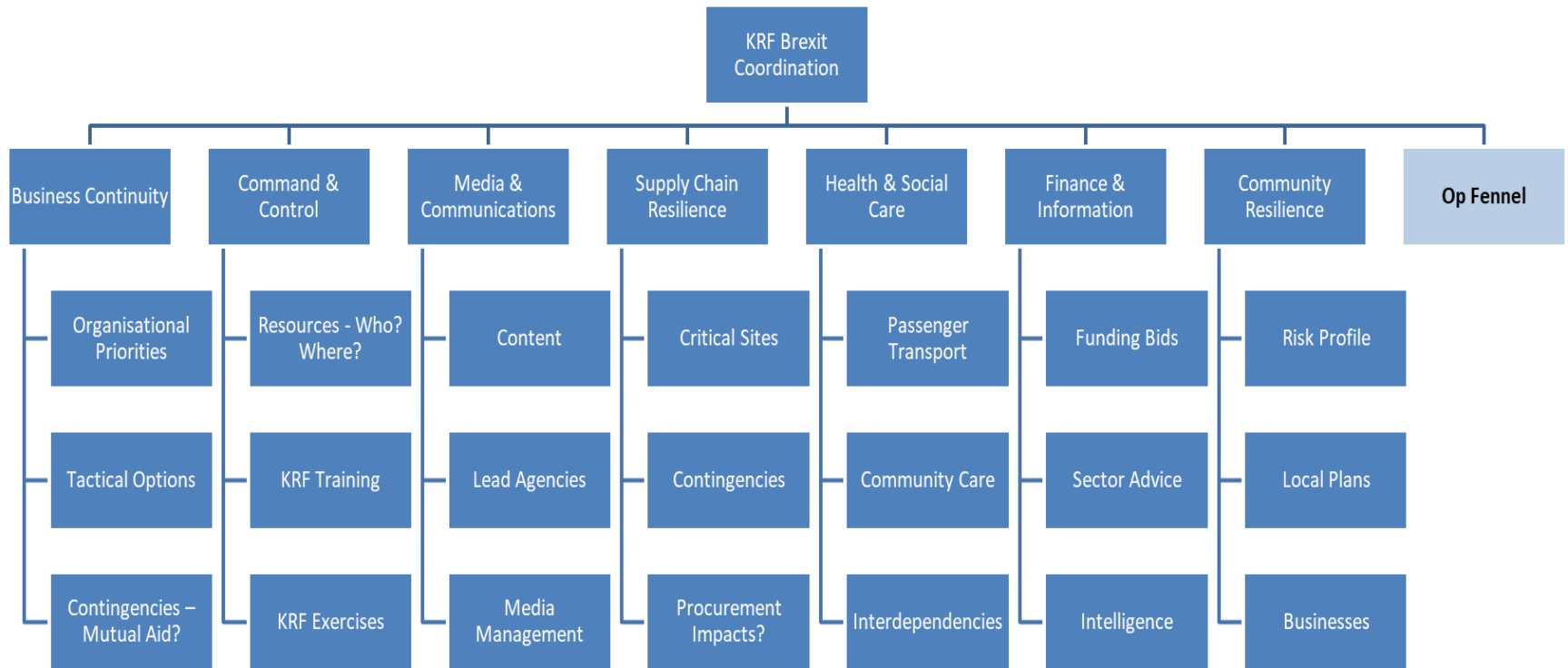
Brexit : Local Authority Engagement

- Boroughs and districts are reviewing business continuity plans
- Understanding the impacts on the community, local business and tourism industry
- Joint communications and engagement ongoing – signposting to government advice
- Involving districts in multi-agency planning and response
- KCC co-ordinating funding bid into MHCLG
 - Flexible working costs
 - Staffing costs in response
 - Street cleansing costs

Wider Engagement

- HMG Border Delivery Group
 - KRF supported Border Contingency Planning Workshop in June and the UK Local Authority Border Steering Groups in July
- Kent Border Steering Group
- KCC Brexit Co-ordination Group
- London & SE LRF / SE7

Brexit : KRF Work Streams



Contact Details / Further Questions
mike.whiting@kent.gov.uk